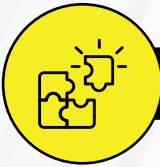
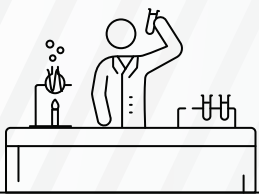


Making a Difference: A New Era for Compliant Laboratory Equipment

Modern laboratory instruments are revolutionizing how we produce **trusted results** through innovations in data integrity and connectivity

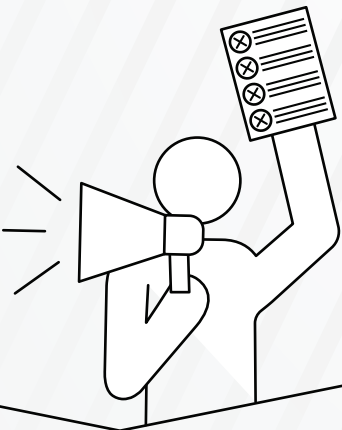


Data integrity entails...

- Ensuring data is recorded as intended
- Ensuring data remains the same as when originally recorded

Data integrity violations are alarmingly common

- Back-dating
- Unfollowed procedures
- Incomplete data transfer
- Incomplete audit trail



Connectivity implies...

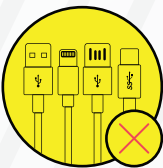
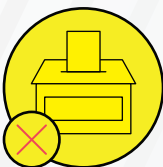
...instruments, processes, and data should be linked together to create powerful integrated systems



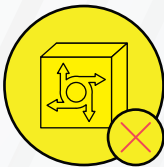
Lab system (LIMS/ELN)

Traditional means of instrument documentation have limitations

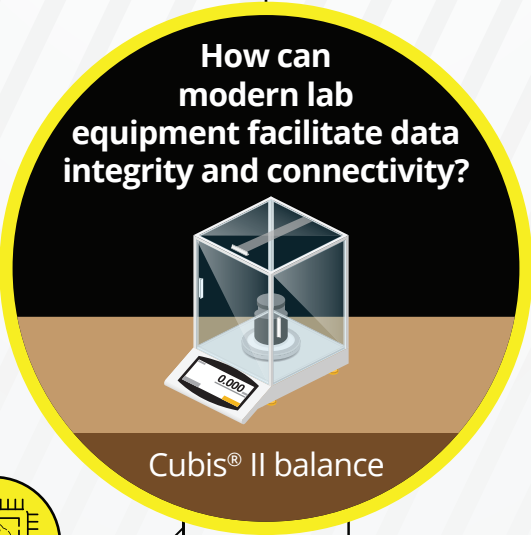
Printouts
(Require handwritten signatures, tedious to store and retrieve)



Serial data transfer
(Potential safety issues, metadata often left behind)



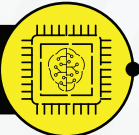
Converter/middleware
(Increased complexity, high cost and effort)



Cubis® II balance

Compliance by design

Audit trail and alibi memory



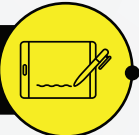
Backup



Access control and management



E-signatures



Safe data handling and transfer



Time synchronization

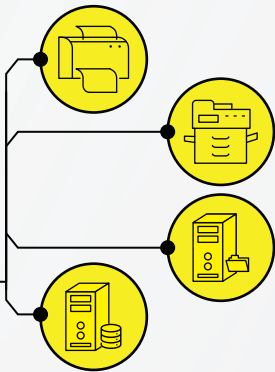


Measurement uncertainty and status monitoring

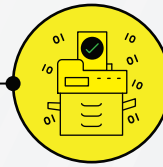


Your balance, your way

Wide range of future-proof connectivity options



Digital and compliant documentation workflow



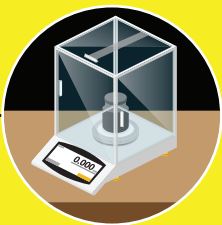
Seamless integration into lab systems through plug-and-play connections



The Cubis® II balance showcases how the design of modern lab equipment can make all the difference

Simplicity

Compliance



Efficiency

Versatility